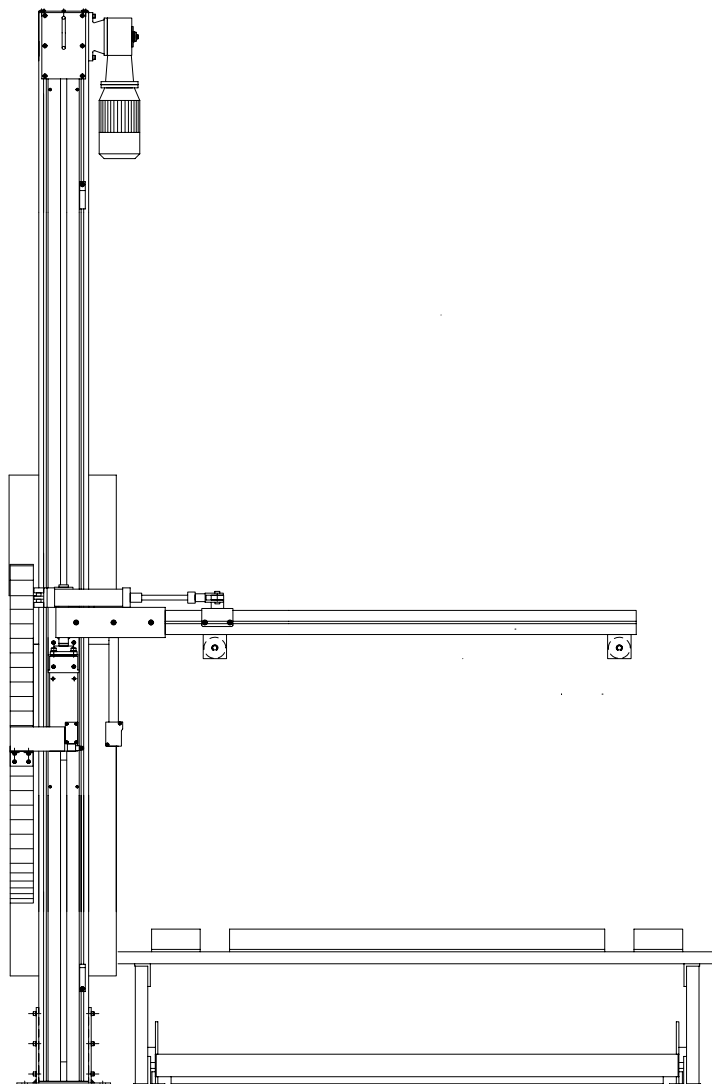


MACHINE No:



Fully automatic top sheet dispenser - CTFP

**Applies stretch film on
top of pallet goods**



Operators manual

GENERAL

Automatic stretchwrappers are used to package pallet goods with stretch-wrap film, thus ensuring that the load is stable for transportation.

This Operator's Manual describes, besides the stretchwrapper itself, optional equipment such as top platen and adjoining conveyors, even when such equipment is not included.

Safety instructions



- Before operating the machine, read this manual carefully.
- The machine must be placed in a fenced-off area since it is fully automatic and will start without prior warning.
- You may only operate the machine if you are appropriately trained.
- Keep clear of the machine during operation.
- Do not place tools or loose objects on the machine
- Turn off the main power switch at end of work
- Machine operators are to be trained by Cyklop personnel
- To stop the machine immediately - press the emergency button
- Clean the machine on a daily basis at end of work
- Touching the electrical equipment is dangerous
- You may work on the electrical equipment only if you are a qualified electrician

Contact Cyklop

- to purchase stretch-wrapping film (Sales Department)
- for service (Service Department)
- to order spare parts (Spare Parts Department)

OPERATOR'S INSTRUCTION

The top sheet dispenser is fully automatic and will start up automatically without any prior warning.

Never step or climb onto the machine or the adjoining conveyors without first turning off the automatic controls.

The starting position for the top sheet dispenser is with the bar at top of the mast and above the film cassette.

If not press "STARTING POSITION". Then start the top sheet dispenser by pressing "AUTO SELECTOR".

INSTALLATION OF CTFP

1. Erect the mast and place it beside the conveyor.
2. Put in the arm profile into the holder and tighten it. When the arm is above the conveyor the centerline between the grippers should be the same as the centerline of the conveyor. The arm shall be in the bottom of the holder, move the complete mast if necessary. The swinging movement shall be against transporting direction of the load.
3. Connect the pneumatic tubes for the grippers.
4. Put the cassette by the side of the mast. The opening side out from the conveyor.
5. Make sure that the mast and cassette are standing right angled in every direction, cassette and arm might have to be adjusted during test and start up.
6. Connect the pneumatic tubes for the knife cylinder and attach the inductive sensor S16 into the hole on the cassette. This for counting pulses during rotation of rollers.
7. Connect the power supply to the CTFP with 1x230 V + ground connection, use output fuse F2 in the GL 1000.
8. Connect the pneumatic, 6 bar. Be careful when you do this, because the arm may swing over to the other position.
9. Put on the main switch and switch on the control voltage, and push the reset button. The arm will move upwards to its initial position. When the arm is at the top position, it shall also be above the cassette (not the conveyor).
10. Push the auto button, the arm will move downwards to the cassette, stop the movement with the emergency button when the grippers are 50 mm above the cassette.
11. Adjust the cassette so the grippers can go into the openings.
12. Pull out the emergency button and push the reset button.
13. Push auto button, the arm moves downwards again, but let now the grippers get into the openings in the cassette.
14. Grippers will now close, arm start moving upwards. Alarm will appear since there is no film in the cassette, arm moves back to the top position.
15. Place a top film roller into the cassette as on shown sketch. Start testing with top film. You might have to adjust the cassette if the top film isn't pulled out correctly.
16. The photocell on side of the mast S10 starts the film cycle. When a load breaks the light beam, arm starts moving downwards. The mirror for this photocell should be placed on the other side of the conveyor.

FILM SPOOL LOADING

When the film is exhausted the machine will automatically revert to it's initial position and then stop.

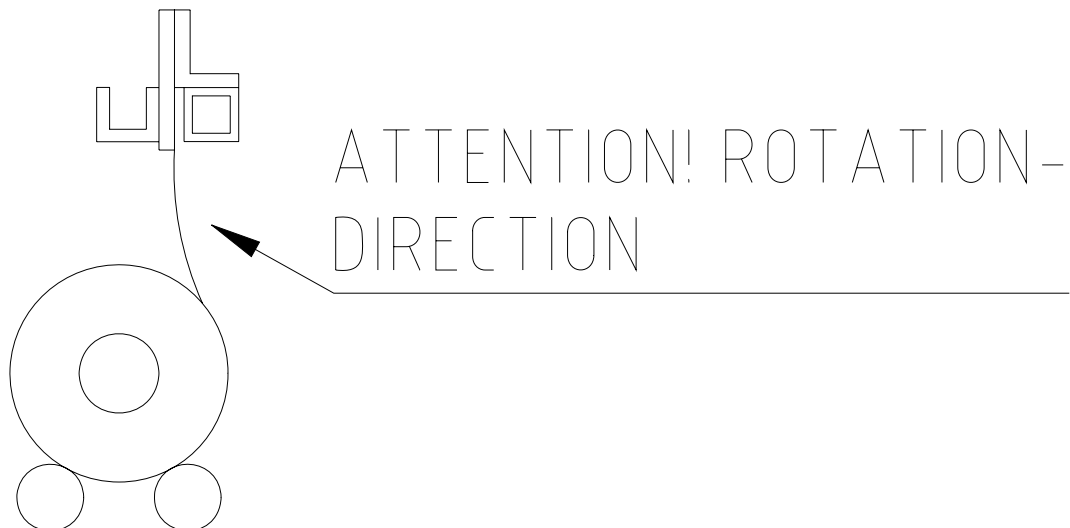
Press "START POSITION" and the autosequence is off.

The red lamp will turn off.

Fit a new roll of film into the cassette. See sketch.

Pull a short length of film out of the cassette.

Press "AUTO SELECTOR" and the top filming cycle will recommence.



GENERAL WORKING DESCRIPTION OF CTFP

The machine is in the "AUTO SELECTOR" position.

- The bar is turned out over the conveyor with a top sheet hanging in the grippings. S13 is actuated.
- When there is goods moving towards the top sheet dispenser, the photo electrical cell S10 will be actuated by the goods. The bar is moving downwards.
- Photo electrical cell S11 is actuated by the goods, the bar stops 200 mm above the goods.
- When the goods has passed the bar, S11 will not be actuated, the grippings will open and drop the top sheet on the goods.
- The bar is moving upwards.
- The bar is turned in over the film cassette. S12 is actuated.
- The bar moves downwards against the film cassette. It stops in the cassette.
- The grippings grab the film.
- The bar moves upwards. The film spool is rolling in the film cassette. S16 is actuated (pulses).
- The bar stops when right length is rolled out.
- The knife cut of the top sheet.
- The bar moves upwards to the top of the mast.
- The top sheet dispenser is ready for a new cycle.

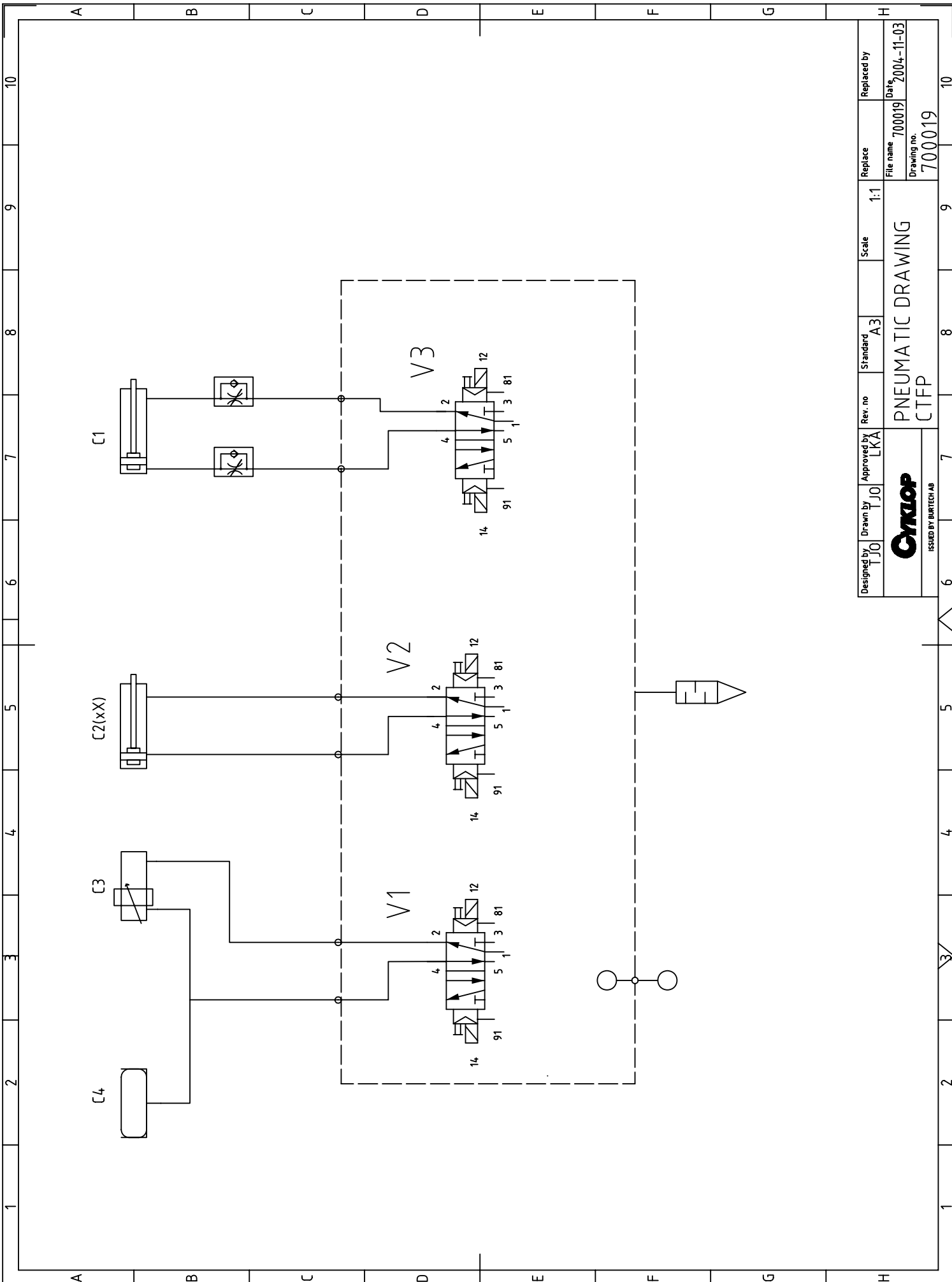
SERVICE INSTRUCTIONS


Service is recommended twice a year.

- Check the pneumatic so there's no leakage.
- Check the cables and pneumatic tubes. There must not be any damage.
- Chec so there are being right angles between mast and cassette, mast and bar, mast and conveyor. The winding for the bar must also be 90°.
- Oil the chain.
- If the cutting knife is worn, replace it.
- Check screws. They must be tightened.

FAULT DIAGNOSIS CHART

Fault	Cause	Remedy
The machine wont start	The emergency stop is actuated. The main switch is off.	Pull out the emergency stop. Turn the main switch on.
The machine starts but the cycle will not be bringed to an end.	The air supply is off. The film is exhausted.	Turn the air supply on. Fit a new roll of film.
The top sheet slips of the goods	S11 is pointing to low. The bar stops to early	Point the S11 upwards a little.
The red lamp turns off	The film is exhausted. S11 has been actuated towards the cassette. Safety stop against jamming.	Fit a new roll of film. Press "START POSITION"
The top sheet is not smooth when it's pulled up from the cassette.	Mast and cassette is not being at right angles to each other.	Check that mast and/or cassette are tightened.



Designed by TJO	Approved by LKA	Rev. no	Standard A3	Scale 1:1	Replace	Replaced by
 ISSUED BY BURTECH AB			PNEUMATIC DRAWING CTFP			File name 700019
						Date 2004-11-03
						Drawing no. 700019

PNEUMATIC LIST CTFP 700019

Pos	Q	Description	Art./Drwg.nr
		VALVETERMINAL CPV-10-4A-MP-R-V-LM2J+W	700020
V1	1	SOLENOIDVALVE CPV 10-M1H-5LS-M7	
V2	1	SOLENOIDVALVE CPV 10-M1H-5JS-M7	
V3	1	SOLENOIDVALVE CPV 10-M1H-5JS-M7	
	1	BLANKING PLATE CPV 10 RZP	
	1	CONNECTOR CABLE KMP3-9P-08-5	
	1	SILENCER U-3/8B	
	1	PUCH-IN-FITTING QS-1/8-8-I	710195
C1			
	1	CYLINDER FESTO DNC 50 160 PPVA	710070
	2	ONE WAY FLOW CONTROL VALVE GRLA-1/4-PK-4-B	710029
	1	ROD CLEVIS SG-M16x1,5	710072
	1	SWIVEL FLANGE SNCB-50	710199
C2			
	1	CYLINDER FESTO ADV 32 25PA-A	Casette 1600 and 1800 only
	2	QST 1/8-6 I	
	1	CYLINDER FESTO ADV 32 25PA-A	710050
	2	QST 1/8-6 I	700059
	1	CYLINDER FESTO ADV 32 25PA-A	710050
	2	QSL 1/8-6 I	710131
		CASSETTE 1300	
C3			
	1	CYLINDER DGO-16-1420-PPV	710200
	2	ONE-WAY FLOW CONTROL VALVE GRLA M5 PK 4B	710030
C4			
	1	CLAMPING MODULE EV-20-75x5	710136
	1	NIPPLE FITTING CN M5 PK4	710039
		CASSETTE 1600	
C3			
	1	CYLINDER DGO-16-1720-PPV	710076
	2	ONE-WAY FLOW CONTROL VALVE GRLA M5 PK 4B	710030
C4			
	1	CLAMPING MODULE EV-20-75x5	710136
	1	NIPPLE FITTING CN M5 PK4	710039
		CASSETTE 1800	
C3			
	1	CYLINDER DGO-16-1920-PPV	710201
	2	ONE-WAY FLOW CONTROL VALVE GRLA M5 PK 4B	710030
C4			
	1	CLAMPING MODULE EV-20-75x5	710136
	1	NIPPLE FITTING CN M5 PK4	710039

The air supply should be 6-7 bar.

Cutting knife
Cylinder C1

Velocity is regulated by means of the to on return reductions valves positioned on the cylinder. The cylinders movement mut take 2-3 seconds.

Grippings
Cylinder C2 and C3

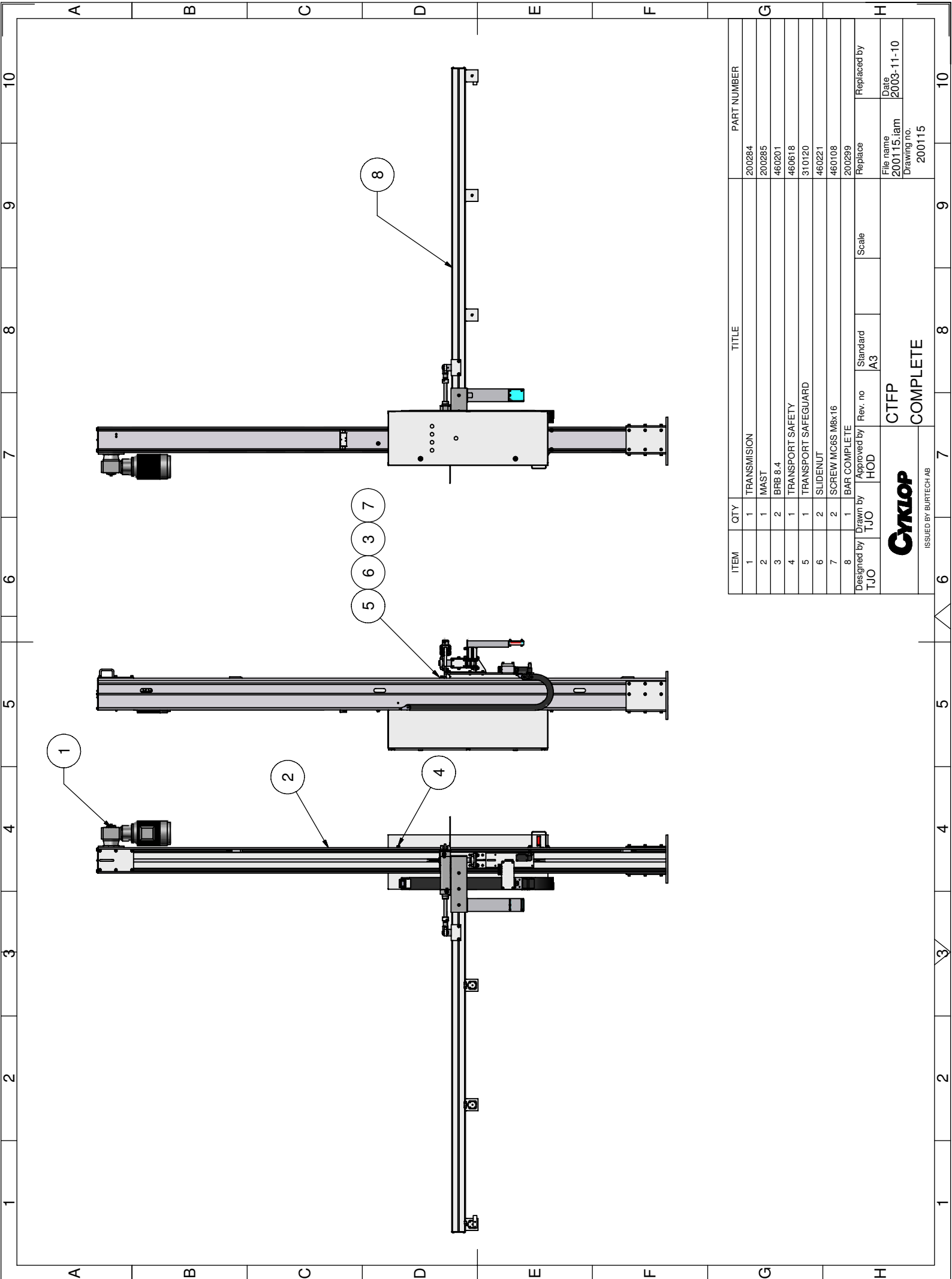
The grippings velocity is not to be regulated.

Winding cylinder for the bar
Cylinder C4

Movement must take 4-5 seconds. Adjust the cushioning so the cylinder will retard gently


Film-holder
Cylinder C5

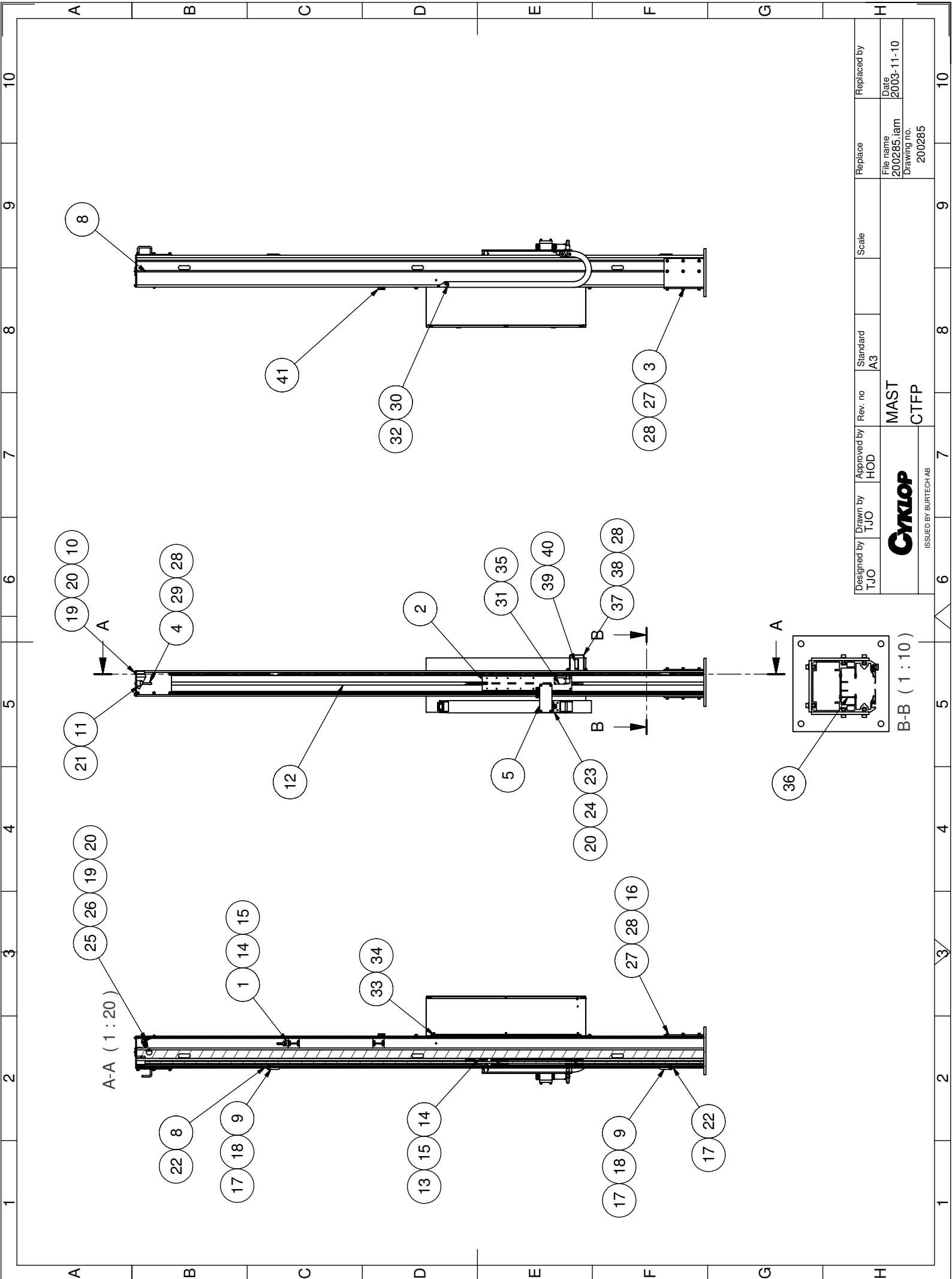
Not to be regulated.




ITEM	QTY	TITLE	PART NUMBER
1	1	TRANSMISSION	200284
2	1	MAST	200285
3	2	BRB 8.4	460201
4	1	TRANSPORT SAFETY	460618
5	1	TRANSPORT SAFEGUARD	310120
6	2	SLIDENUT	460221
7	2	SCREW MCGS M8x16	460108
8	1	BAR COMPLETE	200299

Designed by TJO	Drawn by TJO	Approved by HOD	Rev. no A3	Standard A3	Scale	Replaced by Replace	Replaced by Replace
--------------------	-----------------	--------------------	---------------	----------------	-------	------------------------	------------------------

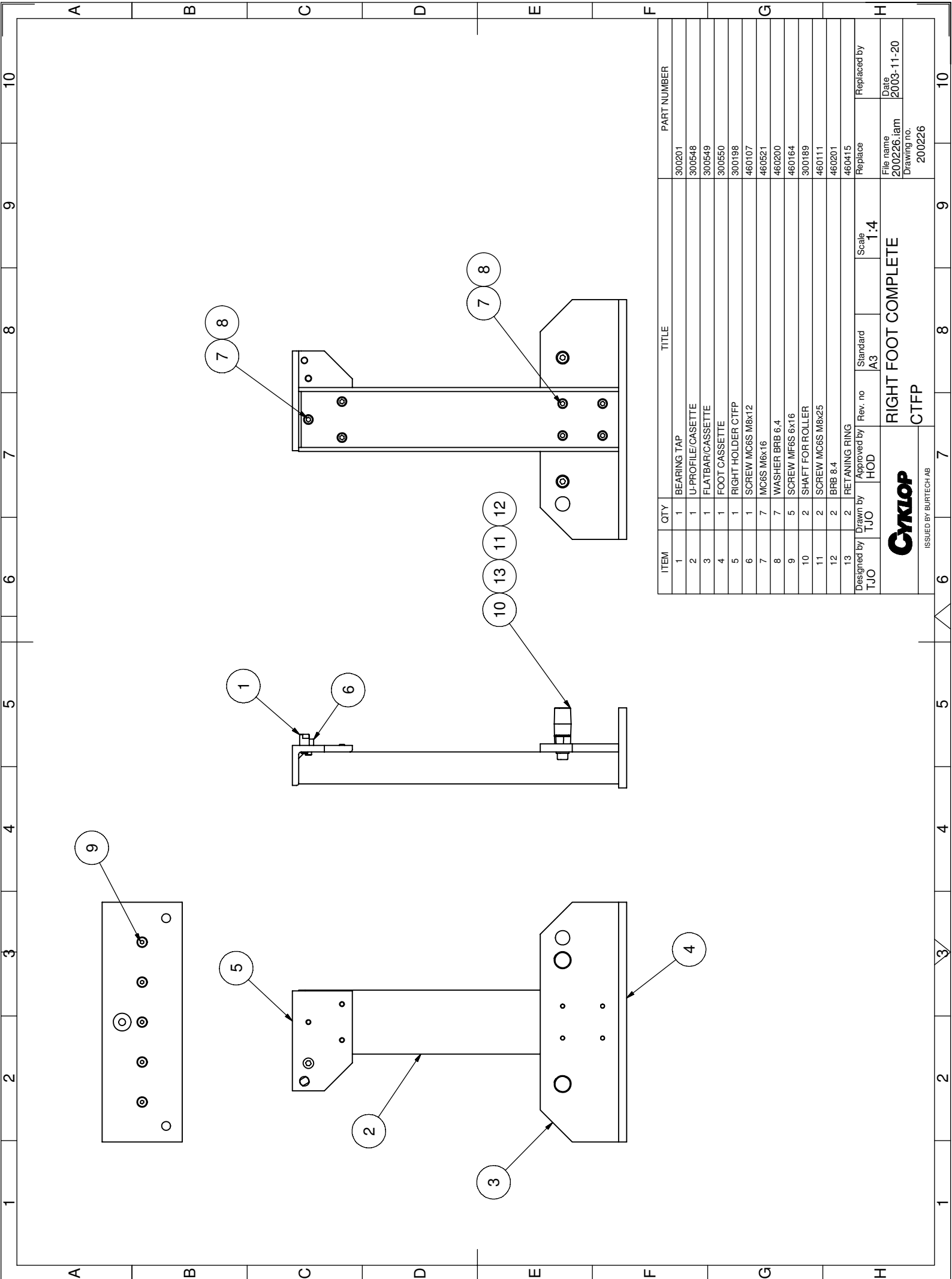
 ISSUED BY BURTECH AB	CTFP	File name 200115.ram	Date 2003-11-10
	COMPLETE	Drawing no. 200115	



Designed by TJO	Drawn by TJO	Approved by HOD	Rev. no	Standard A3	Scale	Replace	Replaced by
 ISSUED BY BURTECH AB			MAST		File name 200285.tam Drawing no. 200285		
			CTFP		Date 2003-11-10		

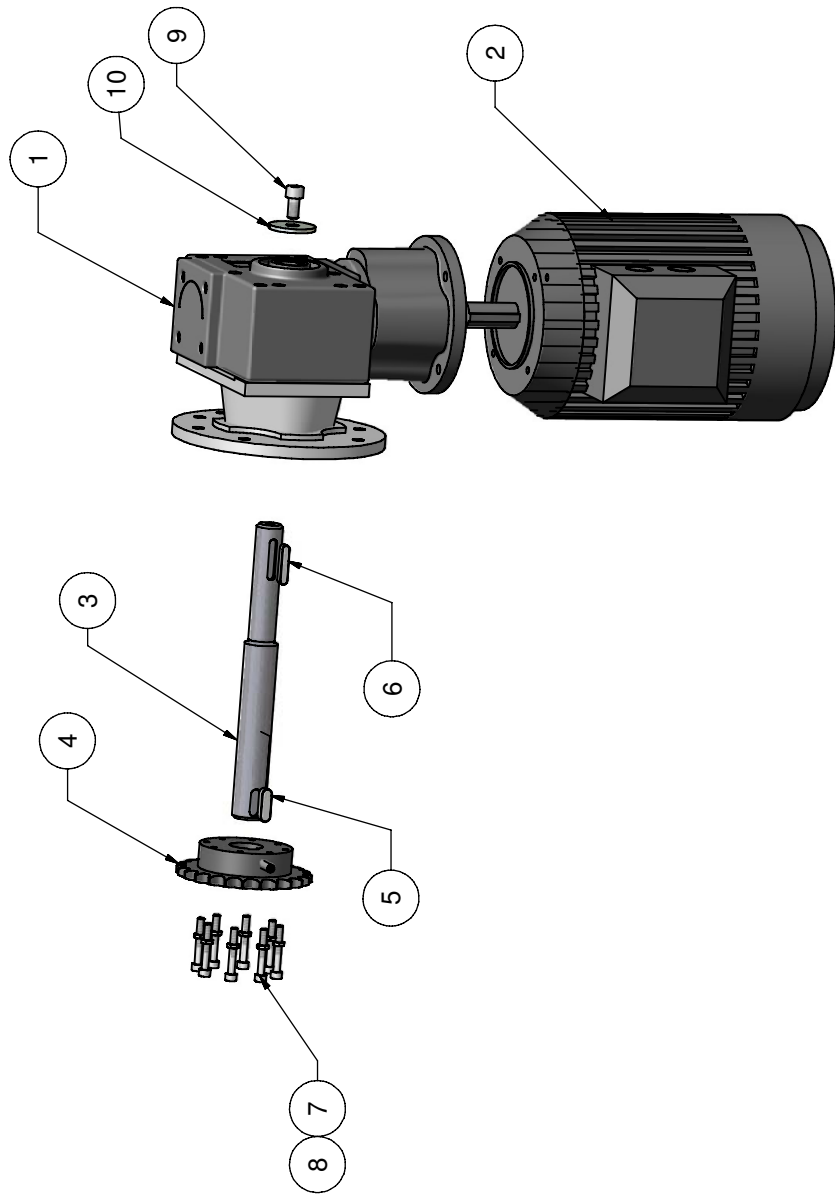
MAST 200285

Pos	Q	Description	Art./Drwg.nr
1	1	COUNTER-WEIGHT COMPLETE	210008
2	1	CARRIAGE COMPLETE	200283
3	1	MASTFOT CTFP	300661
4	1	COVER PLATE	310129
5	1	ELECTRICAL BOX	200017
6	1	ELECTRICAL CARBINET	750190
7	1	CABLE CARRIAGE	400179
8	1	MAST	300768
9	2	LIMIT POSITION UNIT	310033
10	1	COVER PLATE	310013
11	1	CHAIN GUIDE	300748
12	2	COVER PLATE	310445
13	1	ROLLER CHAIN RS 08B	400389
14	2	ENDLINK RS08B	400321
15	2	LOCKINGLINK RS08B	400350
16	8	BARNUT	310147
17	10	NUT M6M 8	460181
18	2	MLC6S M8x16	460552
19	6	SCREW MC6S M5x10	460079
20	10	WASHER BRB 5.3	460199
21	2	SCREW RXK 4,8x13	460544
22	2	STOPSCREW	460543
23	1	SUPPORT CABLECARRIAGE	300533
24	4	SCREW MC6S 5x12	460080
25	1	SENSOR HOLDER MAST	300736
26	1	SENSOR	900074
27	18	SCREW MC6S 8x20	460109
28	26	BRB 8.4	460201
29	6	SCREW MC6S M8x16	460108
30	2	CONNECTION CABLECARRIAGE	400180
31	1	LIMIT SWITCH	900097
32	4	SCREW MF6S 6x12	460163
33	4	SCREW MC6S M8x12	460107
34	4	WASHER NB 8x22x1,5	460574
35	2	SCREW MC6S M5x35	460085
36	1	BARRIER PLATE	301324
37	1	PHOTOCELL PROTECTOR	300601
38	2	SCREW MC6S M8x14	460602
39	1	PHOTOCELL	SEE ELECTRICAL LIST
40	1	HOLDER PHOTOCELL	SEE ELECTRICAL LIST
41	1	VALVE	SEE PNEUMATIC LIST



ITEM	QTY	TITLE	PART NUMBER
1	1	BEARING TAP	300201
2	1	U-PROFILE/CASSETTE	300548
3	1	FLATBAR/CASSETTE	300549
4	1	FOOT CASSETTE	300550
5	1	RIGHT HOLDER CTFP	300198
6	1	SCREW MC6S M8x12	460107
7	7	MC6S M6x16	460521
8	7	WASHER BRB 6.4	460200
9	5	SCREW MF6S 6x16	460164
10	2	SHAFT FOR ROLLER	300189
11	2	SCREW MC6S M8x25	460111
12	2	BRB 8.4	460201
13	2	RETAINING RING	460415

Designed by TJO	Drawn by TJO	Approved by HOD	Rev. no	Standard A3	Scale 1:4	Replaced by
CyKlop						Replace
ISSUED BY BURTECH AB						File name 200226.tam
RIGHT FOOT COMPLETE						Date 2003-11-20
CTFP						Drawing no. 200226

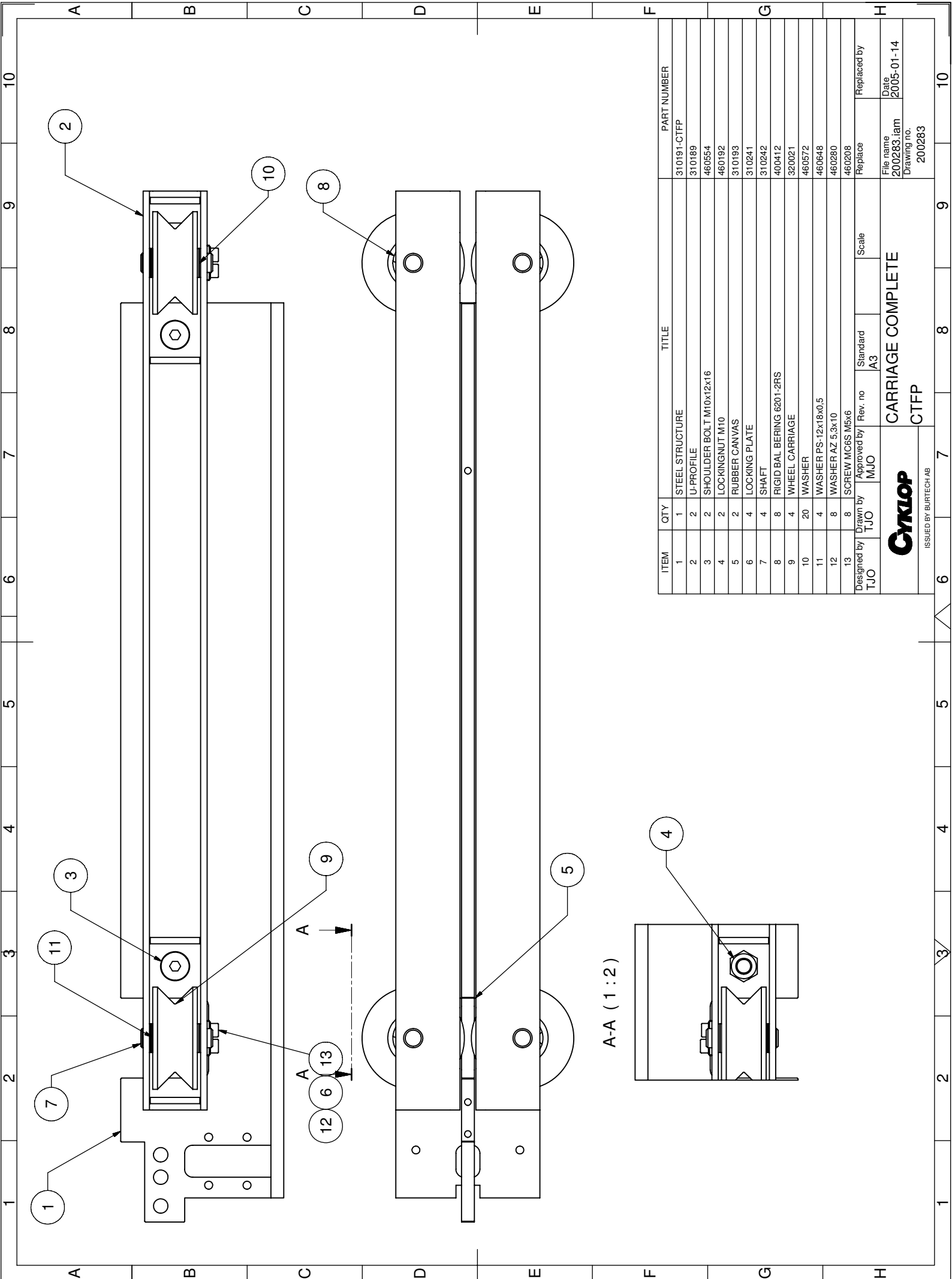


ITEM	QTY	TITLE	PART NUMBER
1	1	WORMGEAR BS40	400840
2	1	MOTOR	400403
3	1	SHAFT FOR WORMGEAR	300772
4	1	KEDJEHJUL HISSMOTOR	300237
5	1	SHAFTKEY	460581
6	1	SHAFT KEY	460567
7	8	SCREW MC6S M5x35	460085
8	8	NUT M5	460179
9	1	SCREW MC6S M8x16	460108
10	1	WASHER SRKB9x35x3	460540
11	1	STOPSCREW	460542

Designed by TJO	Drawn by TJO	Approved by MJO	Rev. no /A3	Standard A3	Scale	Replaced by Replace	Replaced by File name 200284.iptm Drawing no. 200284
--------------------	-----------------	--------------------	----------------	----------------	-------	------------------------	--

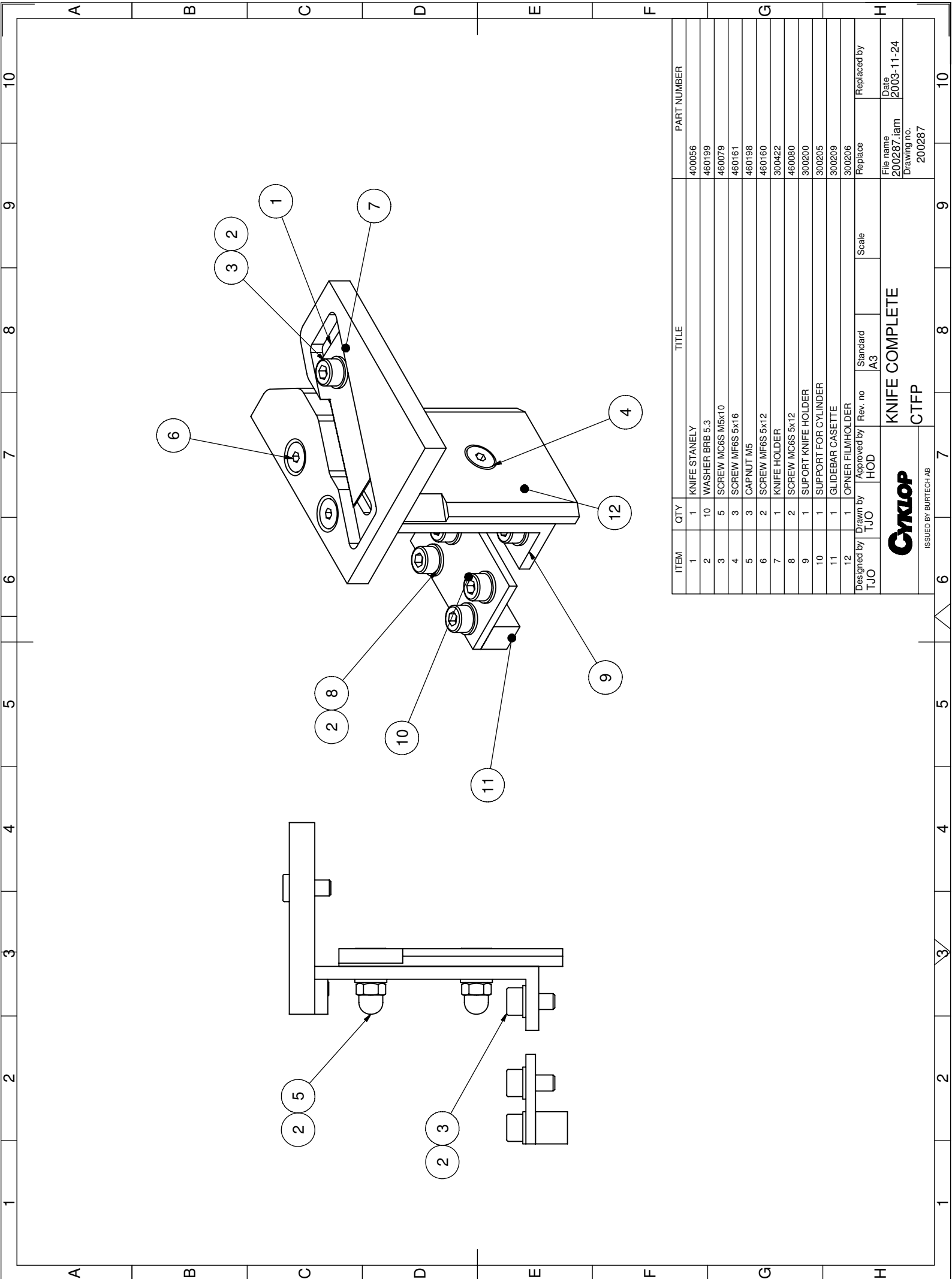
TRANSMISSION
CTFP/PLR


CYKLOP
ISSUED BY BURTECH AB

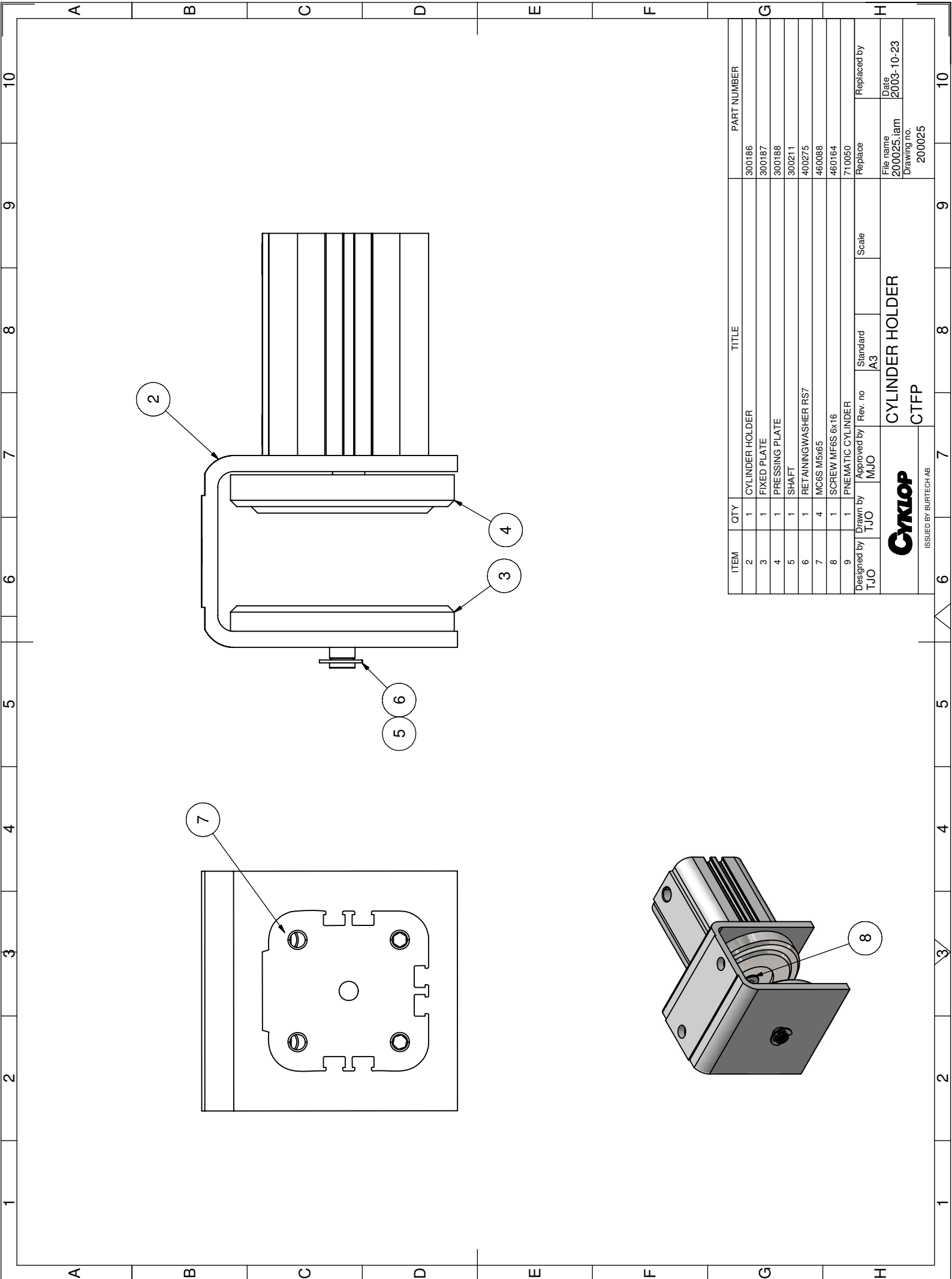


ITEM	QTY	TITLE	PART NUMBER
1	1	STEEL STRUCTURE	310191-CTFP
2	2	U-PROFILE	310189
3	2	SHOULDER BOLT M10x12x16	460554
4	2	LOCKING NUT M10	460192
5	2	RUBBER CANVAS	310193
6	4	LOCKING PLATE	310241
7	4	SHAFT	310242
8	8	RIGID BAL BEARING 6201-2RS	400412
9	4	WHEEL CARRIAGE	320021
10	20	WASHER	460572
11	4	WASHER PS-12x18x0.5	460648
12	8	WASHER AZ 5.3x10	460280
13	8	SCREW MC6S M5x6	460208
Designed by TJO	Drawn by TJO	Approved by MJO	Rev. no /
		Standard A3	Scale /
		Replace	Replaced by /
CARRIAGE COMPLETE			File name 200283.lam
CTFP			Date 2005-01-14
ISSUED BY BURTECH AB			Drawing no. 200283

A-A (1:2)



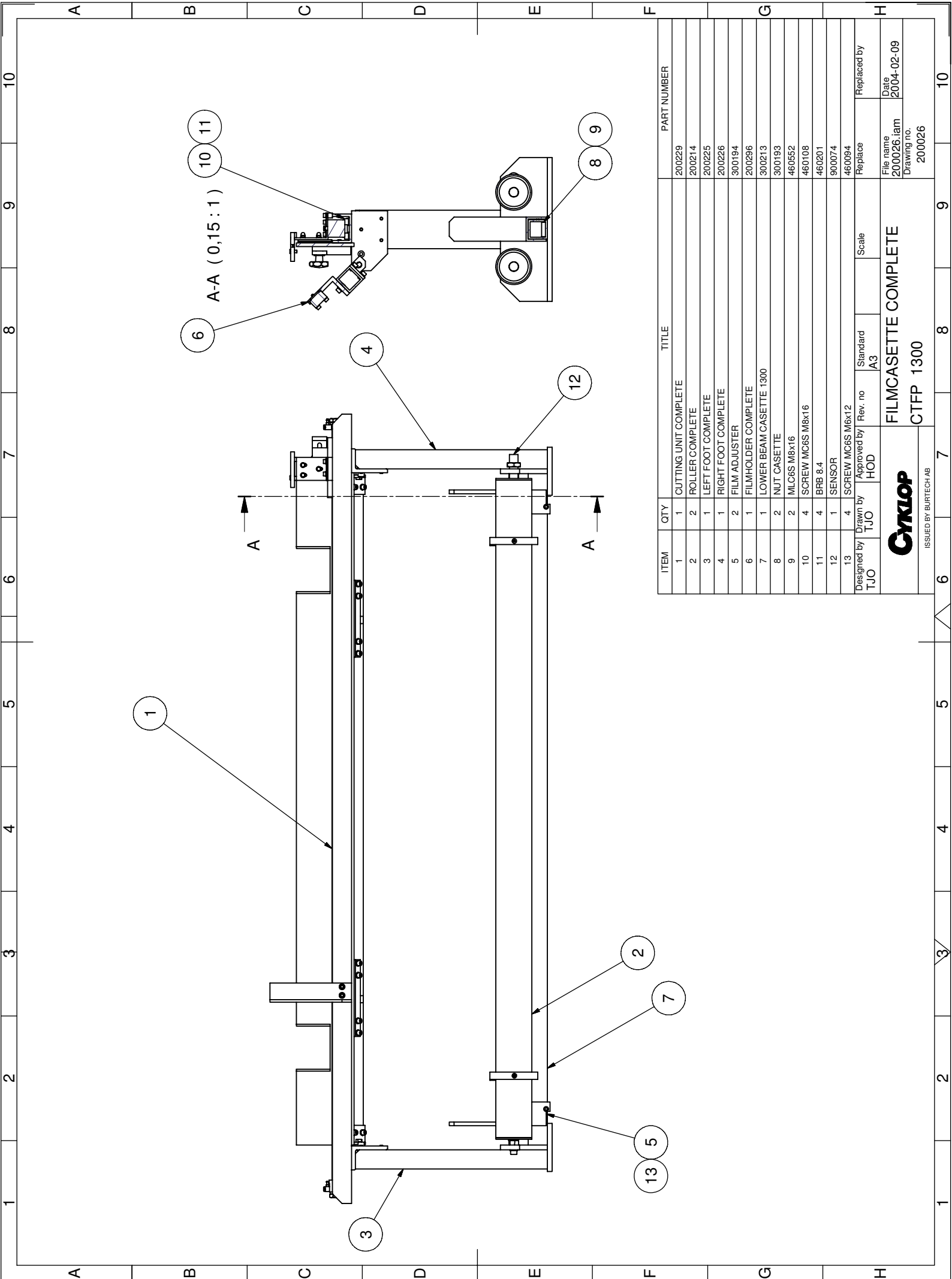
ITEM	QTY	TITLE	PART NUMBER
1	1	KNIFE STANELY	400056
2	10	WASHER BRB 5.3	460199
3	5	SCREW MC6S M5x10	460079
4	3	SCREW MF6S 5x16	460161
5	3	CAPNUT M5	460198
6	2	SCREW MF6S 5x12	460160
7	1	KNIFE HOLDER	300422
8	2	SCREW MC6S 5x12	460080
9	1	SUPPORT KNIFE HOLDER	300200
10	1	SUPPORT FOR CYLINDER	300205
11	1	GLIDEBAR CASSETTE	300209
12	1	OPNER FILMHOLDER	300206
Designed by TJO		Approved by HOD	Replaced by Replace
		Rev. no	Scale
		Standard A3	
 KNIFE COMPLETE CTFP			File name 200287.iptm Drawing no. 200287
ISSUED BY BURTECH AB			Replaced by
			Date 2003-11-24



ITEM	QTY	TITLE	PART NUMBER
2	1	CYLINDER HOLDER	300186
3	1	FIXED PLATE	300187
4	1	PRESSING PLATE	300188
5	1	SHAFT	300211
6	1	RETAINING WASHER RS7	400275
7	4	MC6S M5x6S	460088
8	1	SCREW MF6S 6x16	460164
9	1	PNEUMATIC CYLINDER	710050
Designed by TJO	Drawn by TJO	Approved by MJO	Rev. no /
		Standard A3	Scale
		Replaced by	Replaced by
		File name 200025.iptm	Date 2003-10-23
		Drawing no. 200025	



ISSUED BY BURTECH AB
CYLINDER HOLDER
 CTFP

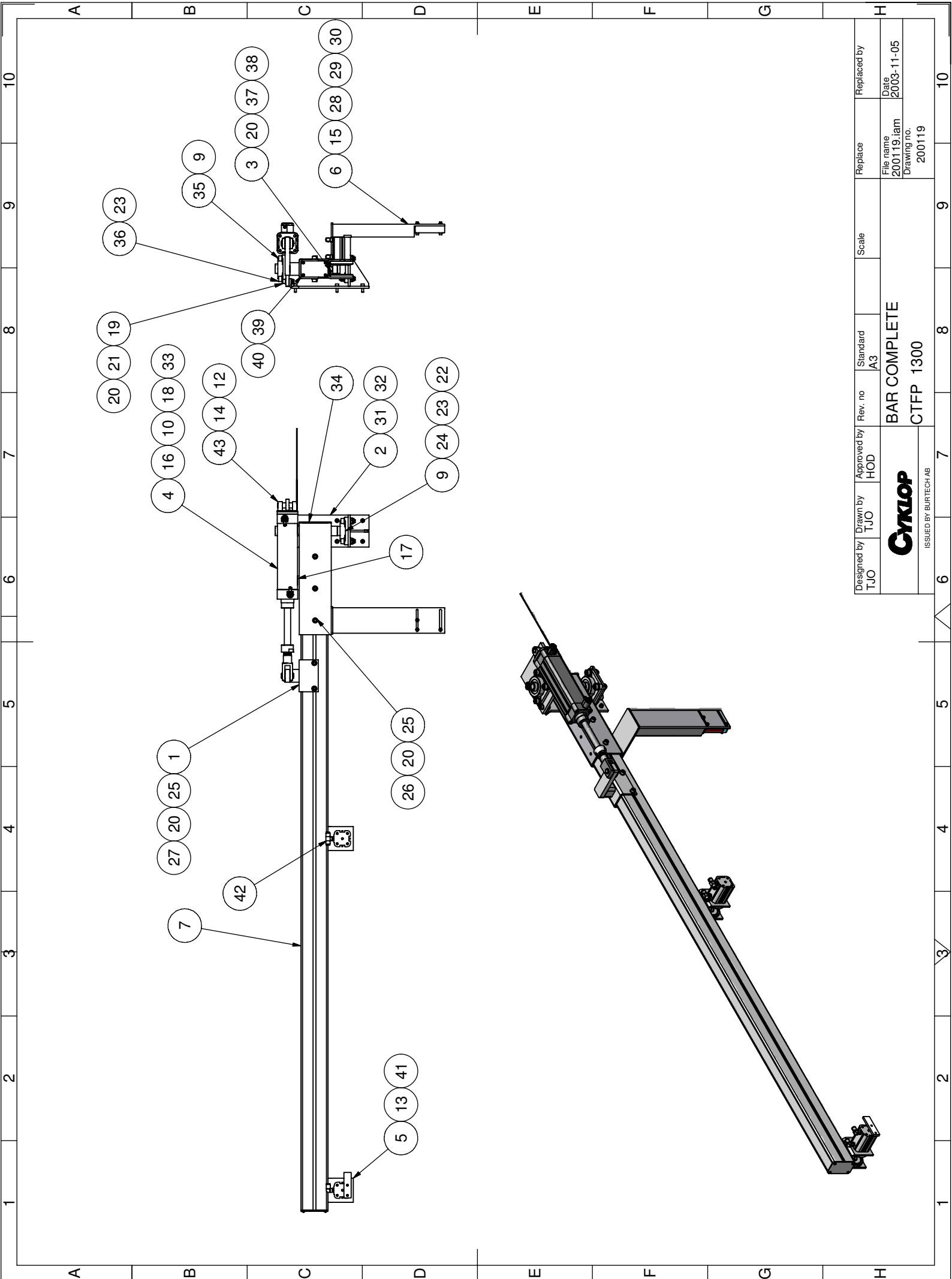



ITEM	QTY	TITLE	PART NUMBER
1	1	CUTTING UNIT COMPLETE	200229
2	2	ROLLER COMPLETE	200214
3	1	LEFT FOOT COMPLETE	200225
4	1	RIGHT FOOT COMPLETE	200226
5	2	FILM ADJUSTER	300194
6	1	FILM HOLDER COMPLETE	200296
7	1	LOWER BEAM CASSETTE 1300	300213
8	2	NUT CASSETTE	300193
9	2	MLC6S M8x16	460552
10	4	SCREW MCGS M8x16	460108
11	4	BRB 8.4	460201
12	1	SENSOR	900074
13	4	SCREW MCGS M6x12	460094

Designed by TJO	Drawn by TJO	Approved by HOD	Rev. no /A3	Standard A3	Scale	Replaced by Replace
FILM CASSETTE COMPLETE						Replaced by
CTFP 1300						File name 200026.tam
						Date 2004-02-09
						Drawing no. 200026



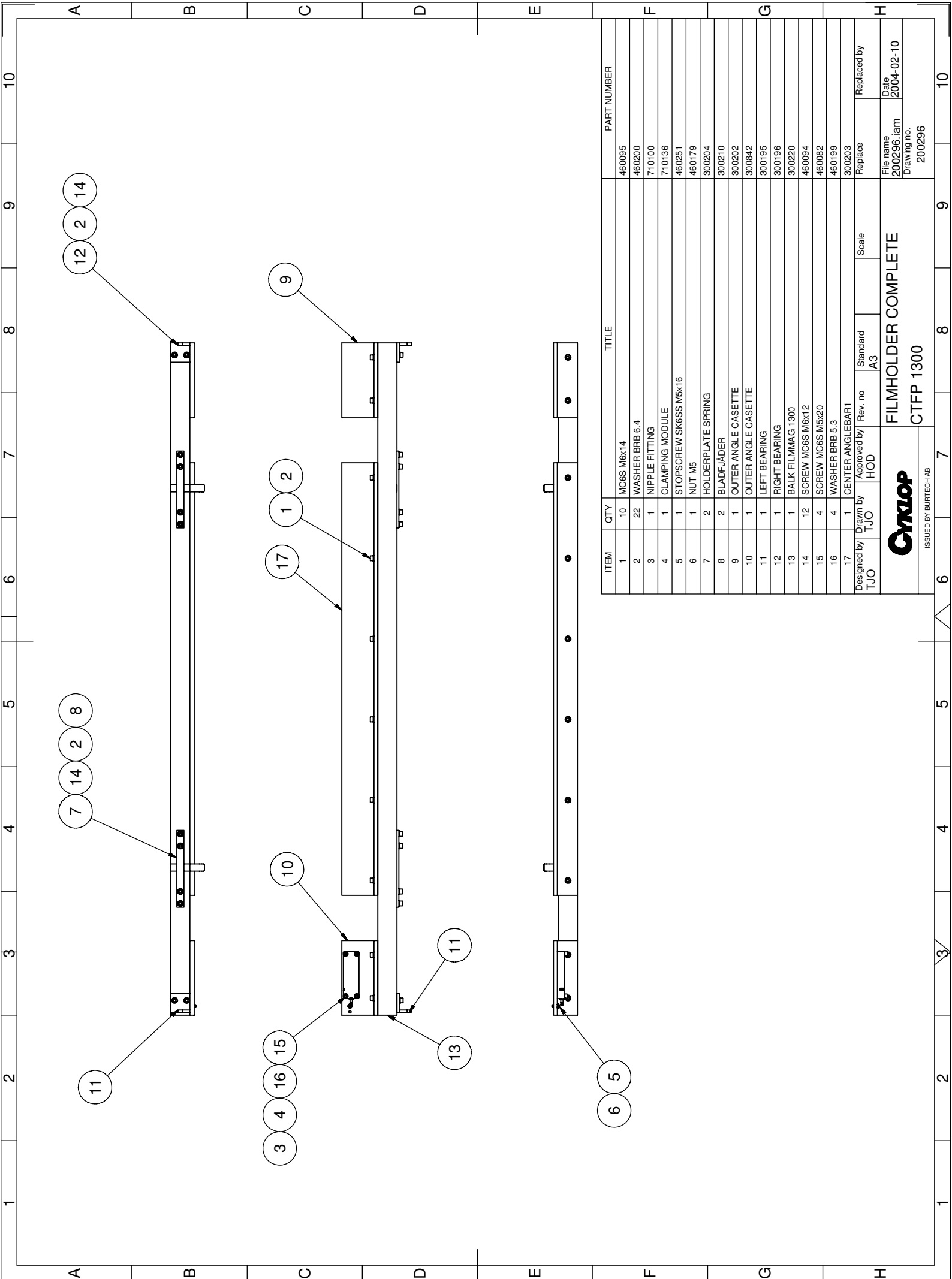
ISSUED BY BURTECH AB



Designed by TJO	Drawn by TJO	Approved by HOD	Rev. no	Standard A3	Scale	Replace	Replaced by
 ISSUED BY BURTECH AB			BAR COMPLETE		File name 200119.lam		
			CTFP 1300		Date 2003-11-05		
						Drawing no. 200119	

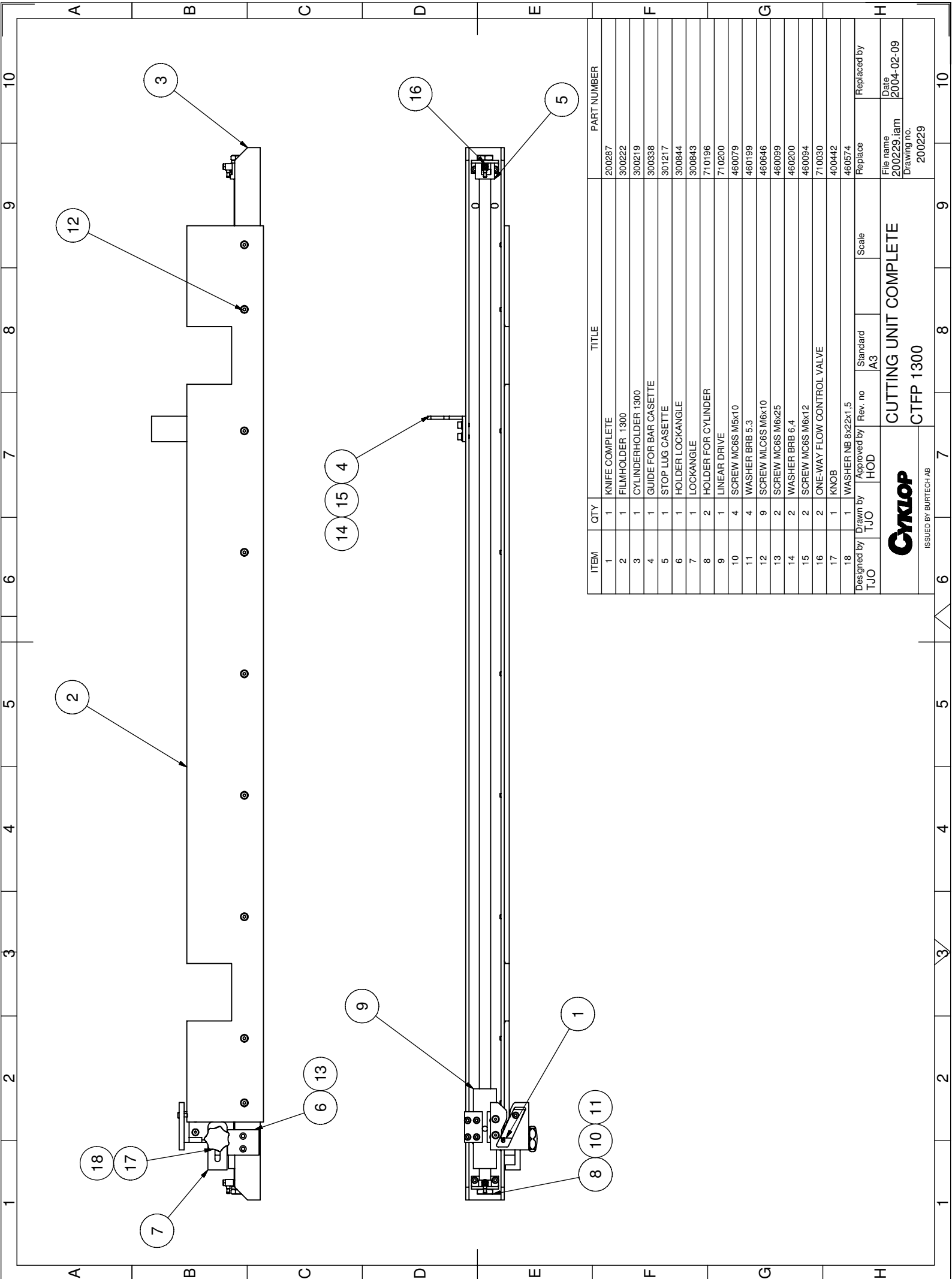
BAR COMPLETE CTFP 1300 200119

Pos	Q	Description	Art./Drwg.nr
1	1	BRACKET FOR CYLINDER	300354
2	1	SVÄNGFÄSTE	300137
3	1	BEAM HOLDER	300699
4	1	PNEUMATIC CYLINDER	710070
5	2	CYLINDER HOLDER	200025
6	1	PHOTOCELL HOLDER WELD	301226
7	1	BEAMPROFILE	300138
8	1	BRACKET FOR CYLINDER	300351
9	2	FLANGE BEARING	400168
10	1	ROD CLEVIS	710072
11	1	SWIVEL FLANGE	710199
12	1	BEARING	400297
13	1	STEERING PLATE	300339
14	2	DISTANCE PIPE FOR CYLINDER	300352
15	1	PHOTOCELL	900660
16	2	ONE-WAY FLOW CONTROL VALVE	710029
17	2	SENSOR	900458
18	1	ADJUSTABLE DISTANCE	300464
19	2	SCREW MC6S M8x25	460111
20	18	BRB 8.4	460201
21	2	LOCKINGNUT M8	460191
22	4	LOCKINGNUT M10	460192
23	12	WASHER BRB 10.5	460202
24	4	SCREW MC6S M10x35	460125
25	10	SCREW MC6S M8x14	460602
26	2	BARNUT	310147
27	2	BARNUT	300897
28	3	SCREW MC6S M5x35	460085
29	6	WASHER BRB 5.3	460199
30	3	LOCKINGNUT M5	460189
31	6	MC6S M6x20	460098
32	6	WASHER BRB 6,4	460200
33	2	NUT FOR ADJUSTABLE HOLDER	300465
34	1	ENDCAP 100x60	400206
35	2	MC6S M10x25	460123
36	2	SCREW MC6S M10x20	460122
37	4	SCREW MC6S M8x16	460108
38	4	NUT M6M 8	460181
39	1	COVER PLATE	310027
40	4	SCREW RXK Z 3,5X9,5	460604
41	2	PUSH-IN FITTING QSL1-8-6	710148
42	2	PUSH-IN FITTING QST1-8-6	710059



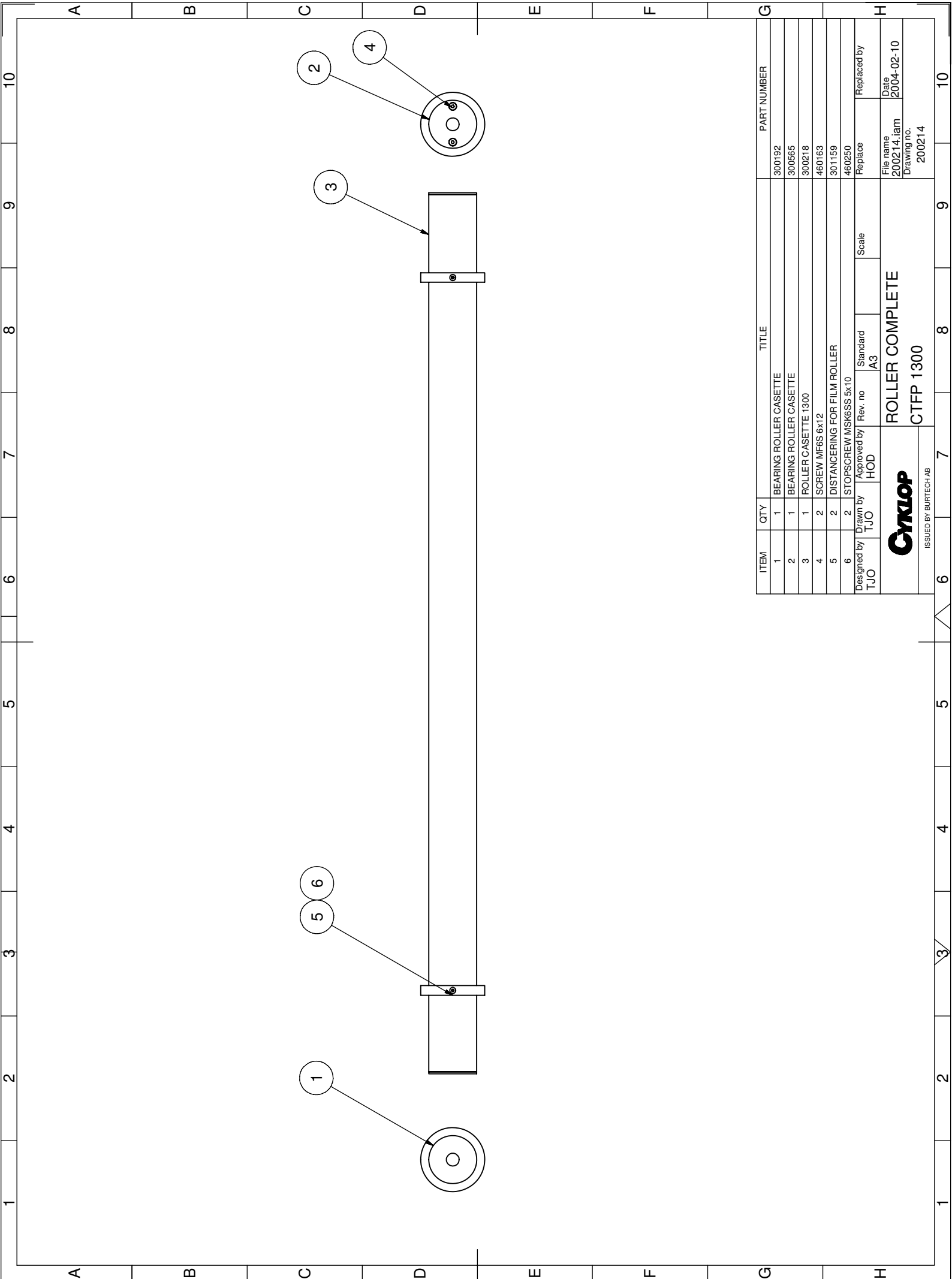
ITEM	QTY	TITLE	PART NUMBER
1	10	MC6S M6x14	460095
2	22	WASHER BRB 6.4	460200
3	1	NIPPLE FITTING	710100
4	1	CLAMPING MODULE	710136
5	1	STOPSREW SK6SS M5x16	460251
6	1	NIJT M5	460179
7	2	HOLDERPLATE SPRING	300204
8	2	BLADFÄDER	300210
9	1	OUTER ANGLE CASSETTE	300202
10	1	OUTER ANGLE CASSETTE	300842
11	1	LEFT BEARING	300195
12	1	RIGHT BEARING	300196
13	1	BALK FILMMAG 1300	300220
14	12	SCREW MC6S M6x12	460094
15	4	SCREW MC6S M5x20	460082
16	4	WASHER BRB 5.3	460199
17	1	CENTER ANGLEBAR1	300203

Designed by TJO	Drawn by TJO	Approved by HOD	Rev. no	Standard A3	Scale	Replaced by
FILMHOLDER COMPLETE						File name 200296.dwg
CTFP 1300						Date 2004-02-10
						Drawing no. 200296




ITEM	QTY	TITLE	PART NUMBER
1	1	KNIFE COMPLETE	200287
2	1	FILMHOLDER 1300	300222
3	1	CYLINDERHOLDER 1300	300219
4	1	GUIDE FOR BAR CASSETTE	300338
5	1	STOP LUG CASSETTE	301217
6	1	HOLDER LOCKANGLE	300844
7	1	LOCKANGLE	300843
8	2	HOLDER FOR CYLINDER	71 0196
9	1	LINEAR DRIVE	71 0200
10	4	SCREW MC6S M5x10	460079
11	4	WASHER BRB 5.3	460199
12	9	SCREW MLC6S M6x10	460846
13	2	SCREW MC6S M6x25	460099
14	2	WASHER BRB 6.4	460200
15	2	SCREW MC6S M6x12	460094
16	2	ONE-WAY FLOW CONTROL VALVE	71 0030
17	1	KNOB	400442
18	1	WASHER NB 8x22x1.5	460574

Designed by TJO	Drawn by TJO	Approved by HOD	Rev. no	Standard A3	Scale	Replaced by
<p align="center">CUTTING UNIT COMPLETE</p> <p align="center">CTFP 1300</p>						<p>File name 200229.lam</p> <p>Drawing no. 200229</p>
<p align="center">CyKLOP</p> <p align="center">ISSUED BY BURTECH AB</p>						<p>Date 2004-02-09</p>



ITEM	QTY	TITLE	PART NUMBER
1	1	BEARING ROLLER CASSETTE	300192
2	1	BEARING ROLLER CASSETTE	300585
3	1	ROLLER CASSETTE 1300	300218
4	2	SCREW MF6S 6x12	460163
5	2	DISTANCER FOR FILM ROLLER	301159
6	2	STOPSCREW MSK6SS 5x10	460250

Designed by TJO	Drawn by TJO	Approved by HOD	Rev. no	Standard A3	Scale	Replaced by
						Replace

 ISSUED BY BURTECH AB		ROLLER COMPLETE CTFP 1300		File name	Date
				200214.dwg	2004-02-10